

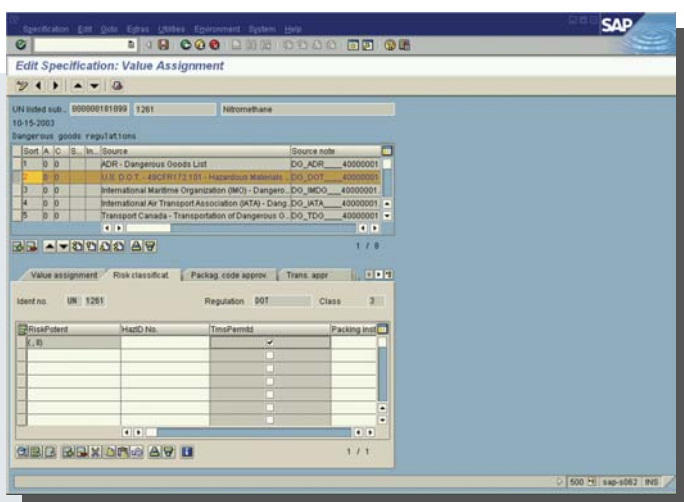
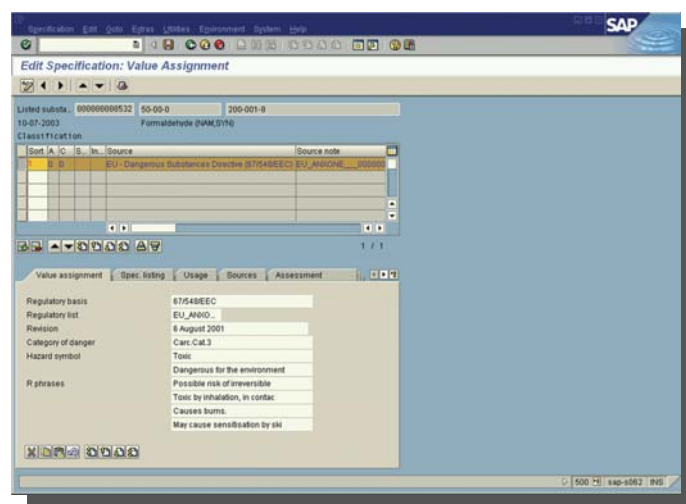
## LOLI - SAP Database Offering

### LOLI-SAP Now Available . . .

#### Product Safety Regulatory Data

Exposure limits, classification, inventory status information and many other EH&S designations are available for jurisdictions all over the world including:

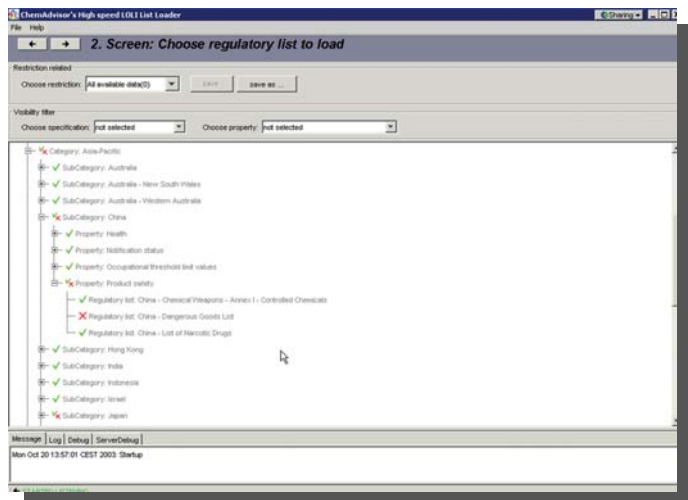
- Africa
- Australia
- Western Europe
- Latin America
- EU Directives and Legislation
- Central and Eastern Europe
- International and Advisory Agencies
- Asia
- Canada
- United States



#### Dangerous Goods Data

Contains the proper shipping name (in multiple languages), hazard class and packing group, risk potential and other transportation information from the following sources:

- ADN
- DOT
- ICAO
- Mexico
- TDG
- ADR
- IATA
- IMDG
- RID



## Load data into an empty system, convert existing data and receive regular updates

The LOLI-SAP Loading Tool easily interfaces with the SAP system. This program allows an initial load of Product Safety or Dangerous Goods data into the correct specification database locations and, if desired, data is also provided for related customization tables. You can use standardized property tree settings or select custom property and characteristic settings for the placement of data. The LOLI-SAP Loading Tool also allows for updates into a system that already has LOLI data loaded. This can include additions (substances or regulations), deletions, or changes to the data.

## Physical Chemical/Toxicity/Ecotoxicity Data

### Physical chemical properties including:

- pH
- Flash point
- Boiling point
- Density
- Water solubility
- Specific gravity
- Vapor pressure
- Extinguishing media
- Octanol/Water coefficient

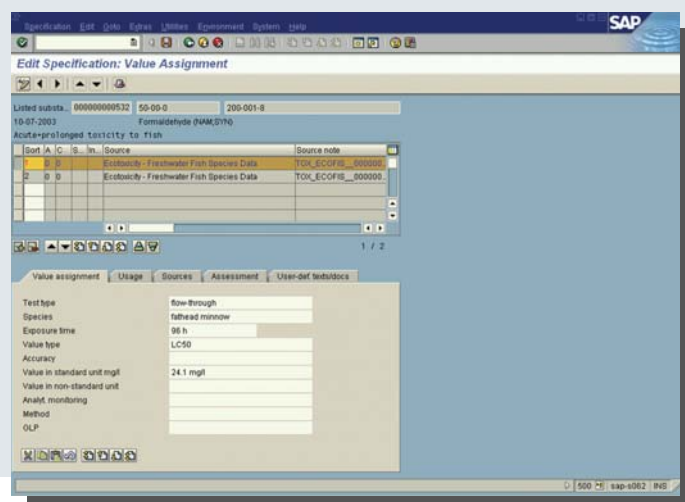
### Ecotoxicity Data including:

- Microtox
- Freshwater algae
- Freshwater fish
- Water flea

### Toxicity data including:

- LC<sub>50</sub> values
- LD<sub>50</sub> values

In addition to data values, the database comes with over one million chemical identifiers and tens of thousands of chemical links.



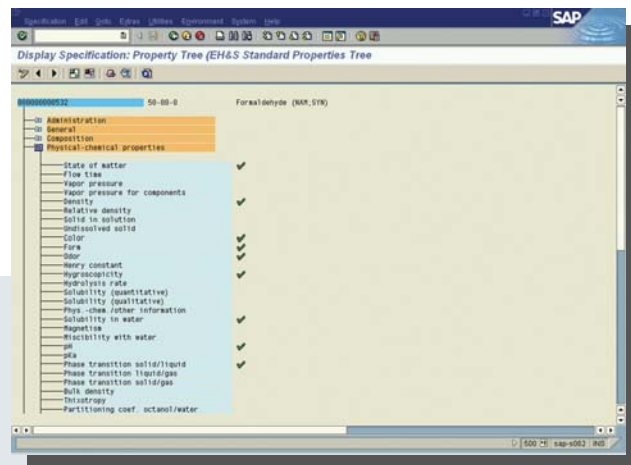
## Compatible with most versions of SAP

The LOLI-SAP System is compatible with versions 4.6 and 4.7 (Enterprise) of SAP/R3. For the SAP EH&S module, versions 2.7b, 3.1 & 3.2 are supported.

ChemADVISOR is in the process of becoming an SAP Certified Data Content Provider to the Open Content Connector (OCC). This standard specification will be a part of the SAP system in future releases.

LOLI-SAP is updated quarterly. Additional value instances of LOLI data may also be added to characteristics which have previously been filled in LOLI-SAP will not overwrite this existing data.

The LOLI-SAP Loading Tool has an easy-to-use interface which connects to the appropriate SAP (ABAP) function calls. The majority of the processing occurs directly within SAP and saves numerous hours in updating time. There is a full set of reporting features so that you can track what is about to change, what has been changed, and what your default settings are.



## Information available in several languages

LOLI-SAP data is available in English and other languages. These translations can be used independently or linked to other language phrase banks.

## Implementation assistance is available

If support is required setting up the LOLI-SAP System, ChemADVISOR can provide knowledgeable SAP consulting resources. These consultants have a familiarity with SAP, SAP EHS and chemical regulations.

ChemADVISOR also has working relationships with most of the major SAP-EHS implementation companies in Europe and the United States and we would be happy to work with your preferred vendor. Due to the ease of use of the LOLI-SAP System (and the future Open Content Connector), consulting assistance should be minimal or unnecessary for performing regulatory updates.

**Call or e-mail now** for more information  
on this or any of our other products.

**800-466-3750** [info@chemadvisor.com](mailto:info@chemadvisor.com)

811 Camp Horne Road  
Suite 220  
Pittsburgh, PA 15237  
Phone: 412-847-2000  
Fax: 412-847-2010  
[www.chemadvisor.com](http://www.chemadvisor.com)